



Quality Analyst Training

Workshop for Advanced Users with Wonderware® InSQL™

**CERTIFIED
QUALITY ANALYST
TRAINING**

Workshop Description

Building on the Quality Analyst Workshop for New Users, this 1-Day “hands-on” workshop explores the most powerful features of Quality Analyst™ within the Wonderware FactorySuite environment. Participants use skills learned in the New Users workshop to write queries, import data from spreadsheets, text files, and databases, automate data reception and statistical reporting. This workshop utilizes the following databases: Excel™, Access™, SQL Server™ and IndustrialSQL Server™. This workshop culminates with a simulation using Quality Analyst to analyze a manufacturing and testing process.

Workshop Purpose

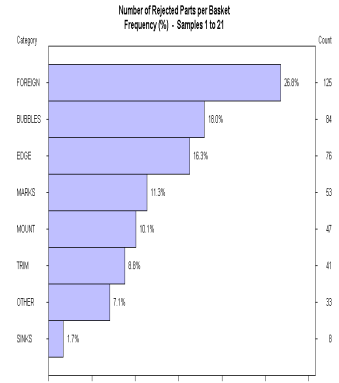
The purpose of this workshop is to familiarize the participant with the most powerful Quality Analyst features including database connectivity within FactorySuite. Additionally, we will explore how off-line statistical quality control (Quality Analyst) complements on-line statistical process control (SPCPro™).

Workshop Prerequisites

Introductory statistical process control, basic computer skills, a working knowledge of spreadsheets, ODBC databases, IndustrialSQL Server, and the Quality Analyst Training Workshop for New Users are prerequisites for this workshop.

Workshop Objectives

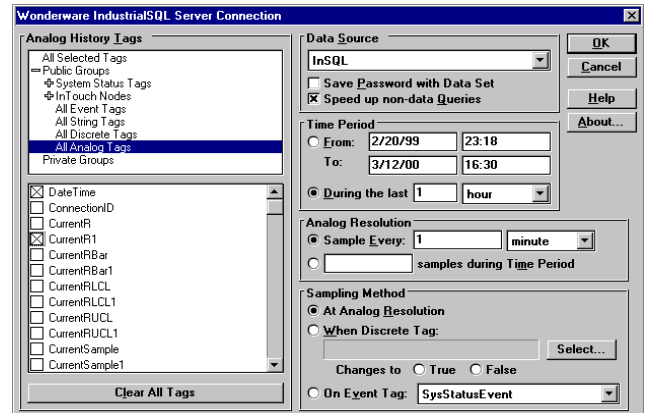
- Discuss the complementary benefits of Quality Analyst and SPCPro.
- Teach how to import data from Excel, Access, Microsoft® SQL Server and Wonderware InSQL Server.
- Review Quality Analyst’s built-in sampling and filtration ability for InSQL.
- Demonstrate how to write a query using Microsoft Access and link to an ODBC database.
- Teach how to import a query into Quality Analyst.
- Demonstrate how to simultaneously import data from Microsoft Access and Microsoft SQL Server into one Quality Analyst data set.
- Demonstrate how to use dynamic data exchange (DDE) to automate data reception.
- Introduce Quality Analyst Web Server™ and demonstrate examples of quality information distribution.



This workshop is led by MAP Quality Engineering and is provided to you in conjunction with Northwest Analytical and Wonderware.



Northwest Analytical, Inc



Workshop Itinerary

Introduction

Introduce workshop itinerary, goals, and objectives. Outline the advanced functions of Quality Analyst. Discuss the complementary benefits of Quality Analyst and SPCPro.

Importing Data from Excel

Review how to create a data set. Use the copy-and-paste method. Save Excel data as a comma-delimited file and import CSV files into Quality Analyst. Create a header file as necessary.

Importing Data from SQL Server

Show how to create an ODBC data source. Import SQL Server data using the database table and variable selector.

Importing Data from Access

Explore how to import data from Access. Write a SQL query using Access. Link to an ODBC database from Access. Import a query into Quality Analyst. Simultaneously import data from Access and SQL Server

into one data set.

Importing Data from FactorySuite

Demonstrate how to import data from InTouch™ (SQL table). Use Quality Analyst’s built-in sampling and filtration ability to import data from IndustrialSQL Server.

Run Files

Learn how to use the Run File Wizard to create automated statistical reports with single, grouped, and interactive outputs.

Dynamic Data Exchange

Demonstrate how to use DDE with Excel as a DDE server.

Quality Analyst Web Server

Demonstrate how Quality Analyst Web Server can be used for quality information distribution.

Engineering Exercise:

This simulation requires data manipulation and analysis to improve a manufacturing process. Students must make sampling, data collection, and quality management decisions.