



# Quality Analyst Training

## Workshop for New Users

**CERTIFIED  
QUALITY ANALYST  
TRAINING**

This workshop is led by MAP Quality Engineering and is provided to you in conjunction with Northwest Analytical.



### Workshop Description

This 1-day “hands-on” workshop provides the participant with an understanding of how to use Quality Analyst™ for off-line statistical quality control (SQC) and data analysis. This workshop explains the basics of the data editor and the graphics viewer. From this foundation, data sets are explored, charts and charting options are practiced, and basic statistical analyses are performed.

### Workshop Purpose

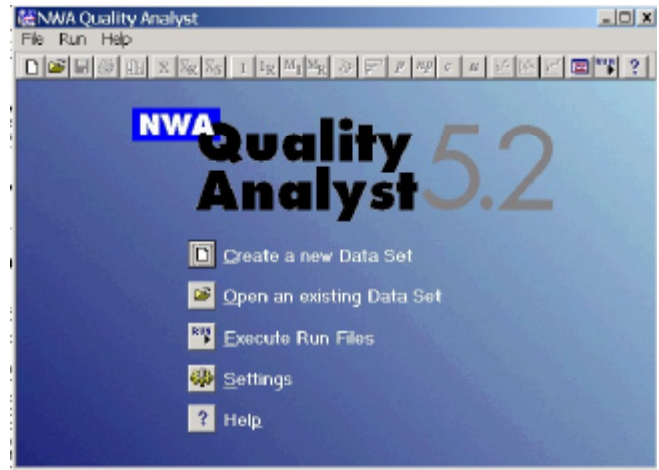
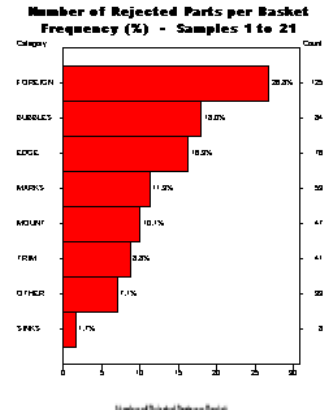
This workshop is designed as an introduction to Quality Analyst. Its purpose is to teach the most common uses of Quality Analyst to facilitate statistical analysis and to create statistical charts and graphs.

### Workshop Prerequisites

Introductory statistical process control and basic computer skills are prerequisites for this workshop. Each participant requires access to a computer with NWA QA 5.2 installed.

### Workshop Objectives

- Introduce the Quality Analyst data editor and graphics viewer.
- Explain the data file structure: .DAT and .HED.
- Teach how to create calculated data values.
- Demonstrate how to customize charts and reports.
- Teach participants how to add annotations to charts.
- Teach the use of the rule violations and descriptions windows to provide insight to charts and graphs in the graphics viewer.
- Demonstrate how to create control charts, Pareto diagrams, histograms, and box plots.
- Teach how to create formatted reports.
- Show how to perform t-tests and regression analysis.
- Teach how to import data from Microsoft® Excel™ as a .CSV file.



## Workshop Itinerary

### Introduction

Introduce workshop itinerary, goals, and objectives. Discuss on-line and off-line uses for SPC/SQC.

### Software Features and Functions

Review the organization of the key components of the software: the Data Editor, Graphics File, Run File, and System Parameter Settings. Configure statistical settings, formulas, and rules.

### Data Sets

Introduce the data file structure: .DAT and .HED files. Open an existing data set and create a new data set. Create calculated data values within existing data sets.

### Charts

Explore the types of charts and the relation to variable type. Create charts and view multiple charts at the same time. Create and print a report containing multiple charts.

### Formatting Charts

Explore the use of the rule violations and descriptions windows. Add comments and annotations to a chart; create

and change the x-axis descriptions of charts, and personalize the graphics colors.

### Histograms

Teach how to add and change specifications; change distribution types; edit the statistical display at the bottom of the histogram, and create a capability report.

### Control Charts

Explain how to manage control chart parameters: scale, limit regions, and plotting. Filter, tag, and sort data. Create a control chart with different control regions.

### Pareto Diagrams

Show how to edit the display, format, and sort methods. Create cost-adjusted Pareto diagrams.

### Formatted Reports

Demonstrate how to create report templates that can be reused to access the most currently available data.

### Statistics

Demonstrate how to perform t-tests and regressions using Quality Analyst.

### Importing Data from Excel

Teach how to import data from Microsoft Excel as a .CSV file.