



**CERTIFIED
Quality Monitor
Training**

Quality Monitor Training

Workshop for New Users

Workshop Description

This one day interactive, "hands-on" workshop guides new users through Quality Monitor's basic and intermediate features. The workshop includes a *design module* to give participants the opportunity to reinforce their Quality Monitor skills by *creating a complete project* from start to finish.



Workshop Purpose

The goal of this workshop is to enable participants to become fluent in basic and intermediate features of NWA Quality Monitor®. Participants will explore all the components of Quality Monitor® (Designer, Workstation, Help Editor, Device Configuration, Menu Editor, File Driver, QMF Conversions, and Settings). Participants will learn how to create user interfaces to collect data and to produce on-line statistical process control (SPC) charts. Additionally, participants will learn how connect Quality Monitor® to external databases and measurement devices.

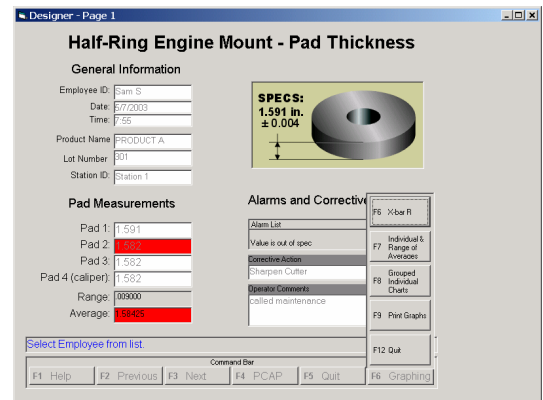
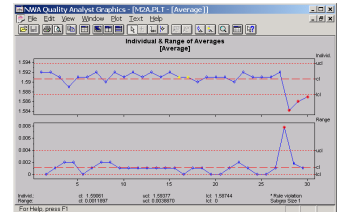
Workshop Prerequisites

Introductory statistical process control and intermediate computer skills are prerequisites for this workshop. Each participant will need access to a computer with NWA QA 5.2, NWA Quality Monitor 2.3, Microsoft® Access, and Microsoft® Word installed.

Workshop Objectives

- Using Quality Monitor® Designer, create a complete application that incorporates:
 - Keyboard entry input fields
 - Device input fields
 - Display fields involving calculations
 - Alarming: visual and audible
 - Drop-down menus
 - Help files
 - Charts (e.g., histogram, X-bar, range, individual)
- Learn how to enter data and display charts through Quality Monitor Workstation®
- Use Quality Analyst® to connect to an ODBC complaint database and archive data
- Learn how to use Quality Monitor® to update Quality Analyst data (.dat) files
- Learn how to create and use a device file to capture data from an external measurement device (Mitutoyu Caliper)

This workshop is led by MAP Quality Engineering and is provided to you in conjunction with Northwest Analytical.



Workshop Agenda

Introduction

Introduce workshop agenda, goals, and objectives. Discuss on-line and off-line uses for SPC/SQC.

Overview

Review the key components of Quality Monitor®: Designer, Workstation, Settings, Help Editor, Menu Editor, and Device Configuration. Review file types, file structure, and database connectivity.

Introduce Design Module Project

Review file-structure and file-types in preparation for the design module project. Review project requirements: screen layout, data collection variables, and command and menu bars.

Designer

Use Designer workspace, titles, and images to create the design module project main screen.

Creating Input, Display, and Label Fields

Create and configure Input and Display fields with alarms, specifications, drop-down menus, etc. Create list files for drop-down menus and help function files.

Command and Menu Bars

Design and create Command and Menu bars to improve user-friendliness.

External Configuration (Devices/Databases)

Use the files provided on the CD to set up a database connection from Quality Monitor® to Microsoft® Access for data storage. Configure Quality Monitor® to read data fed from an external measurement device (caliper).