



SPCx On-Line SPC Training

Workshop for Developers using Wonderware® InTouch™



Workshop Description

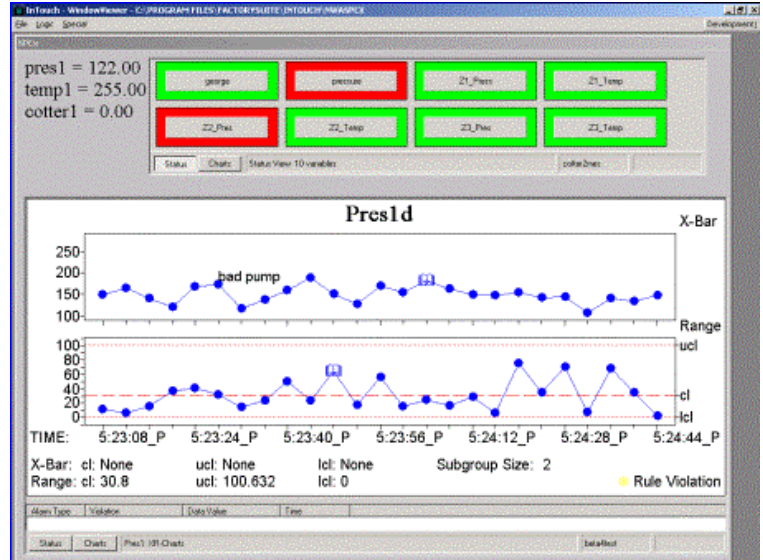
Building on the Quality Analyst Workshop for Advanced Users, this 1-day “hands-on” workshop explores how to best leverage NWA SPCx™ for on-line SPC. This workshop reviews ActiveX concepts, introduces the SPCx interface and its control, and leads the participant through a development exercise to embed SPCx within a Wonderware® InTouch® application.

Workshop Purpose

The purpose of this workshop is to train developers on how to successfully leverage SPCx for on-line SPC within the InTouch® HMI container. Additionally, the workshop will clarify appropriate uses for SPCx, Quality Analyst, and Quality Analyst Web Server.

Workshop Prerequisites

Basic InTouch and a working knowledge of ODBC databases are prerequisites. The NWA Quality Analyst 2-day training workshop, introductory statistical process control, Visual Basic® programming, and ActiveX development are recommended.



CERTIFIED NWA TRAINING

This workshop is led by MAP Quality Engineering and is provided to you in conjunction with Northwest Analytical.

Workshop Objectives

- Review ActiveX concepts.
- Discuss how ActiveX controls are used.
- Introduce the SPCx interface, components, and files.
- Teach how to install SPCx and its controls.
- Review data acquisition techniques.
- Explore the SPCx control properties and relationships to header files.
- Teach how to use the controls for statistical process control charts.
- Demonstrate how to use the controls in the Wonderware® InTouch® container.

Workshop Curriculum

Introduction

Provide an overview of ActiveX concepts: What is an ActiveX control? Why are they beneficial? How are they used?

FactorySuite™ Tools for SPC/SQC

Clarify appropriate uses for SPCx, Quality Analyst, and Quality Analyst Web Server.

SPCx Installation

Review system requirements; Install the controls, and review the file structure.

SPCx Configuration Editor

Explore the Configuration Editor, including the status screen set up, the chart set up, and review the file structure.

SPCx Run Time

Explore the Run Time interface, including the status screen, corrective action, and alarming.

SPCx Data Collection and Configuration

Examine SPCx data collection reading direct from HMI (InTouch) tags. Introduce the SPCx control properties.

Control Chart Control

Review the capabilities of the variable control chart control. Provide tips for configuring the control.

Status Screen

Explore the capabilities of the status screen. Provide tips for configuring the status screen including multi-chart views.

InTouch SQL Access manager

Demonstrate how to use InTouch® SQL Access Manager to chart product test data that resides in a SQL Server database. Provide tips for configuring the tag.

SPCx within InTouch®

Review the use of the above capabilities within a Wonderware® InTouch® application environment.